

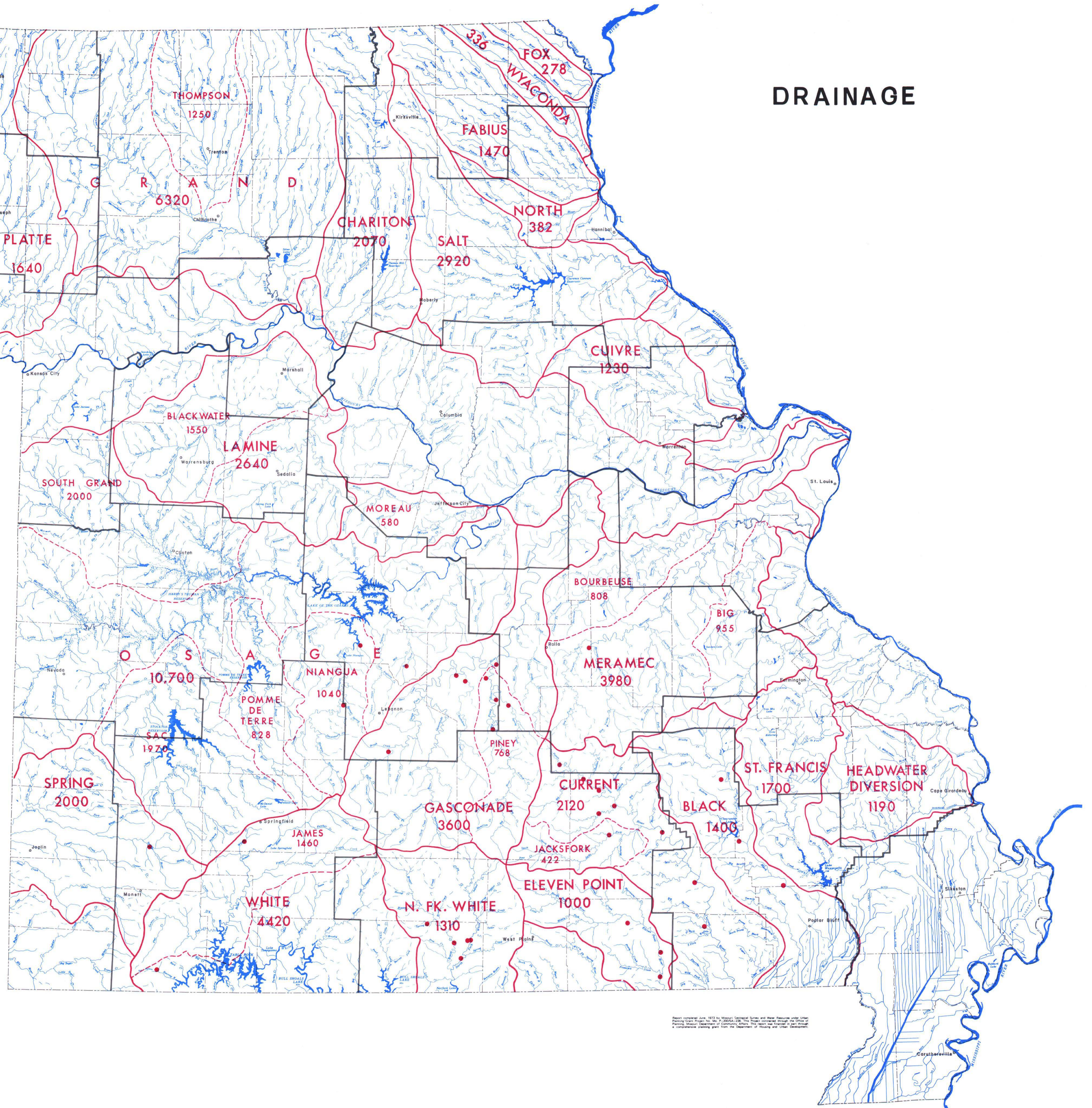
DRAINAGE

Primary drainage divide

Secondary drainage divide

PLATTE
1640
Name of river and approximate area of drainage within Missouri (sq. mi.)

Spring with average flow of 10,000,000 gallons per day or more



Report completed June 1972 by National Geological Survey and Water Resources under United States Geological Survey Act, May 1907, 34 Stat. 225. This report was prepared by the Office of Planning Studies, Department of Commerce, Office of Planning and Development, under contract to the Department of Housing and Urban Development.