

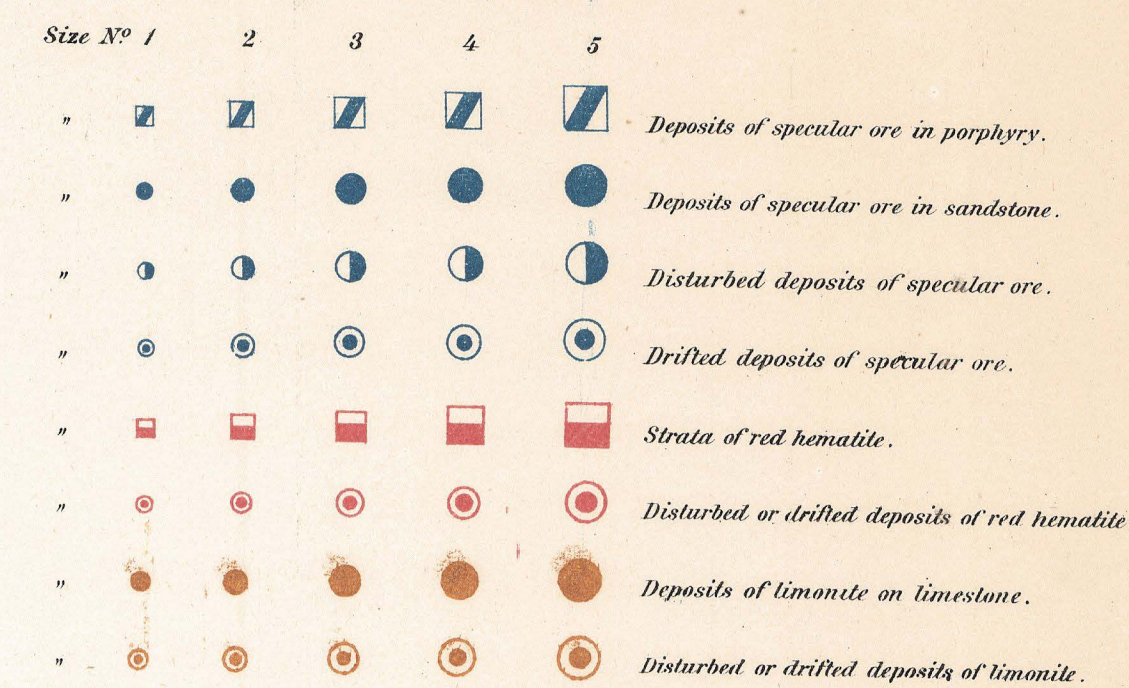
GEOLOGICAL SURVEY OF MISSOURI
RAPHAEL PUMPELLY DIRECTOR.

PRELIMINARY MAP
SHOWING THE DISTRIBUTION OF

IRON ORES IN MISSOURI

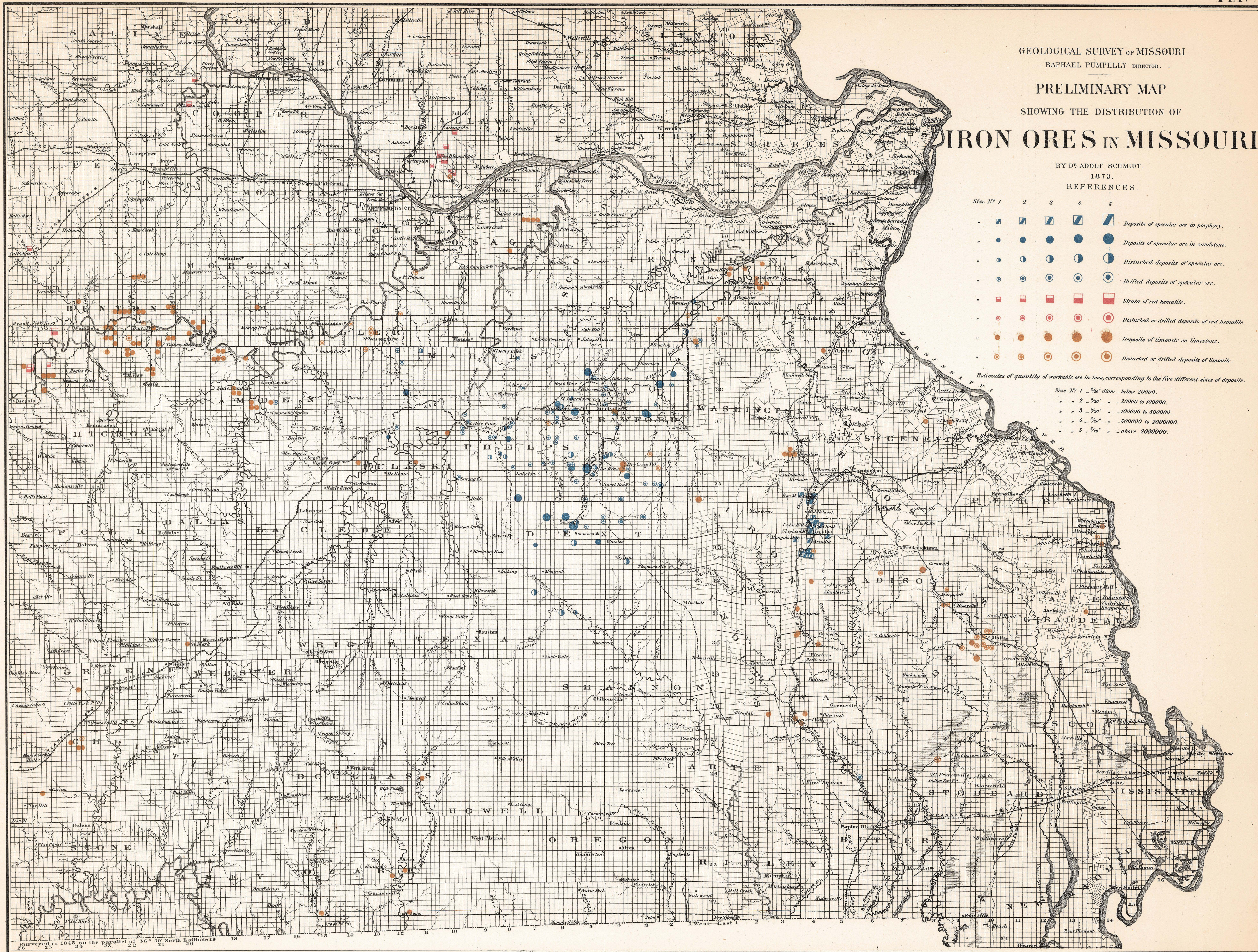
BY DR. ADOLF SCHMIDT,
1873.

REFERENCES.



Estimates of quantity of workable ore in tons, corresponding to the five different sizes of deposits.

Size No 1	1/20" diam.	below 20000.
" 2	1/20"	20000 to 100000.
" 3	1/20"	100000 to 500000.
" 4	1/20"	500000 to 2000000.
" 5	1/20"	above 2000000.



Surveyed in 1845, on the parallel of 36° 30' North Latitude 19