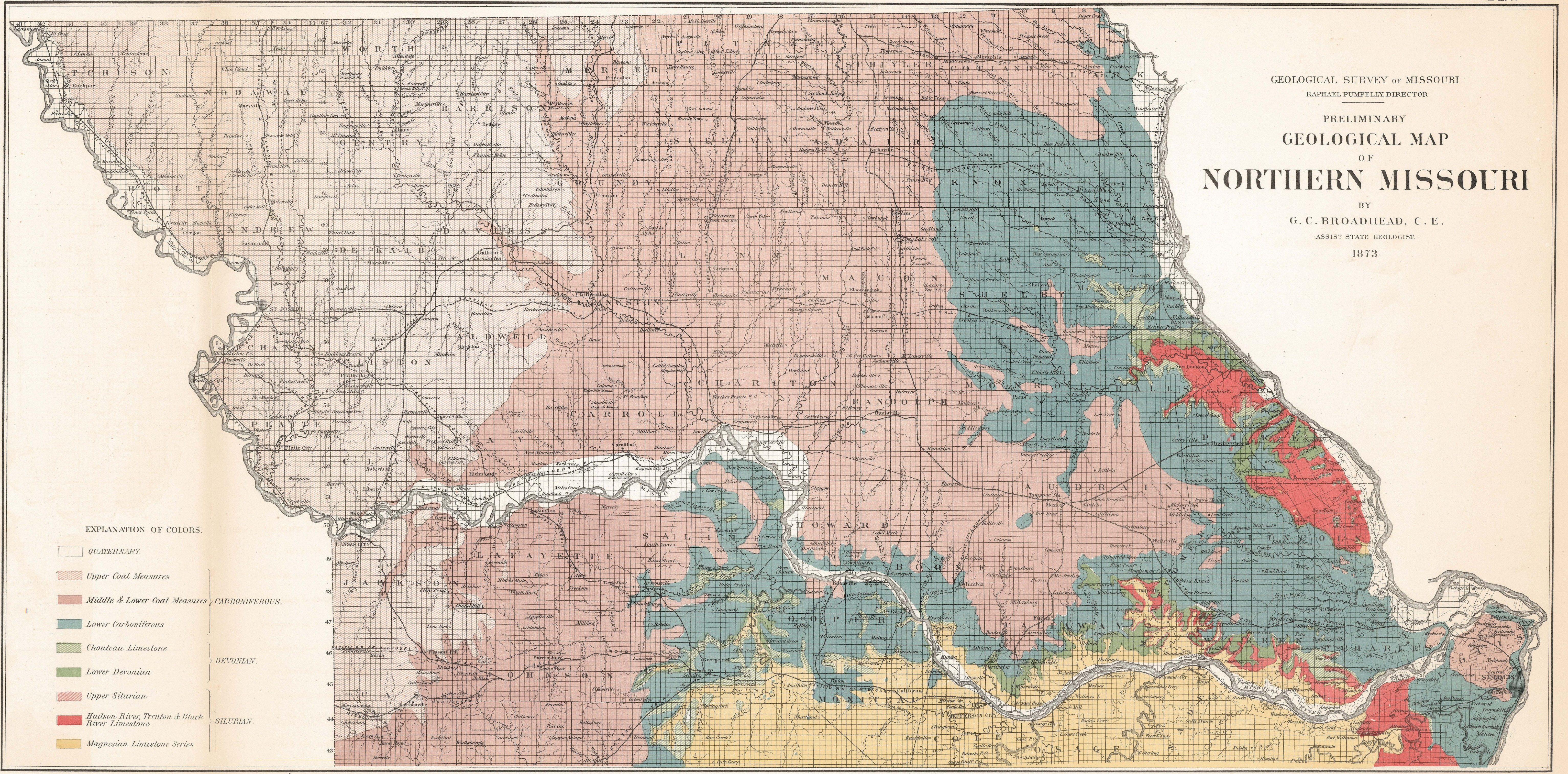


GEOLOGICAL SURVEY OF MISSOURI
 RAPHAEL PUMPELLY, DIRECTOR

PRELIMINARY
 GEOLOGICAL MAP
 OF
NORTHERN MISSOURI

BY
 G. C. BROADHEAD, C. E.
 ASSISTANT STATE GEOLOGIST.

1873



EXPLANATION OF COLORS.

- QUATERNARY.
- Upper Coal Measures
- Middle & Lower Coal Measures
- Lower Carboniferous
- Chouteau Limestone
- Lower Devonian
- Upper Silurian
- Hudson River, Trenton & Black River Limestone
- Magnesian Limestone Series

DEVONIAN.

SILURIAN.